

How to fit your Wooden Blinds

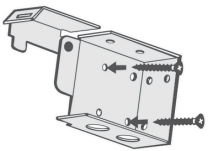
We have sent you

- Your wooden blind
- Brackets x 2
- Screws x 4

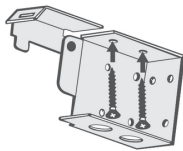
Fixing the brackets

You can fix your brackets in 3 different ways:

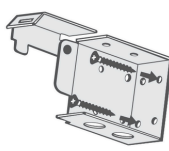
Side fix



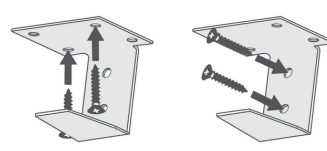
Top fix



Face fix



Middle support bracket



You will need

- Drill with the correct bit
- Metal tape measure
- Crossheaded screw driver
- Pencil

- Open the bracket fully and ensure the bracket is positioned so that it opens towards the room and opens upwards.
- Once you are happy with the positioning of your first bracket, mark up the position with your pencil and mark your drill holes. Use your tape measure across to the other side and do the same with the second bracket.

Fitting the headrail

- Open the metal end caps and slide the blind into the brackets. Ensure your cords are facing outwards into the room. Ensure the headrail is sitting securely into the brackets.
- Push down and snap the hinge doors shut to lock your blind into position.

Fitting the pelmet

- Remove the backing of the velcro and then press the pelmet onto the headboard to fix the pelmet into place.